

REMOTE DIGITAL THERMOMETER/TRANSMITTER

REOTEMP's Remote Digital Thermometer/Transmitter is a high accuracy thermometer with digital display. It features an IP67/ NEMA 4X enclosure and a 5 year battery life. The Remote Digital is perfect for a variety of markets and applications where a high accuracy digital readout is required.



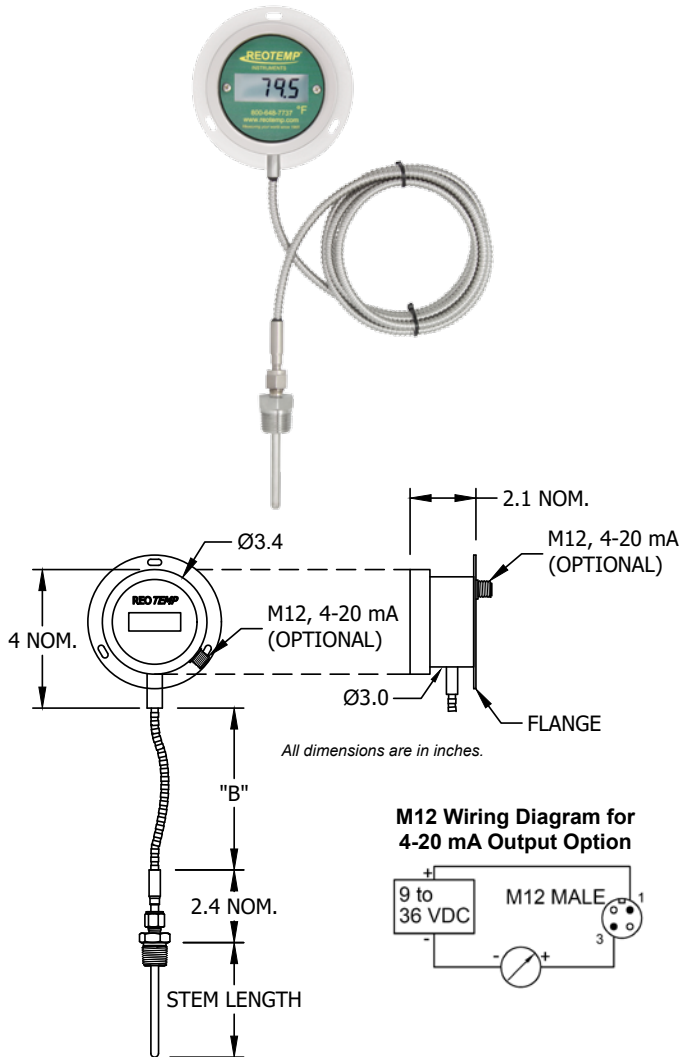
Accuracy



Custom Logo



Made in the USA



M12 Wiring Diagram for 4-20 mA Output Option

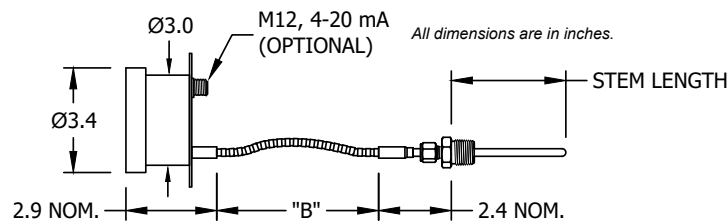
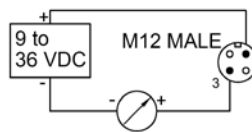


Table 1: Display Resolution

Model	Range	Decimal Point
Low Temp, Displays Decimal	-58°F to 392°F (-50°C to 200°C)	Yes
High Temp, No Decimal	-328°F to 1112°F (-200°C to 600°C)	No

FEATURES / BENEFITS

- High Accuracy 1,000Ω RTD (Class A)
- Water Resistant IP67/NEMA 4X
- 5 Year Battery Life
- 4-20 mA Output Available
- Low or High Temperature Range Models

SPECIFICATIONS

Accuracy	$\pm (0.72 + 0.002 \times t - 32)$ °F, $\pm (0.42 + 0.002 \times t)$ °C, where t = temperature. Example: At 32°F accuracy is ± 0.72 °F.
Sensing Element	RTD, Type Pt1000Ω, Class A
Temperature Ranges	-58°F to 392°F (-50°C to 200°C) or -328°F to 1112°F (-200°C to 600°C)
Output (Optional)	4-20 mA, M12 Connector
Refresh Rate	3 Seconds
Display	4-digit LCD, 1/2" Height
Display Resolution	See Table 1
RFI Effect	1% or Less Typical
Ambient Temperature Range	32°F to 122°F (0°C to 50°C)
Housing Material	Stainless Steel 316
Lens	Plastic Polycarbonate (Standard) or Glass
Probe Material	304 Stainless Steel
Weight	12 oz., Varies by Configuration
Environmental Protection	NEMA 4X/IP67
Power	1 x 3.6V AA Battery (M12 is loop powered 9-36 VDC.)
Battery Life	5 Years Minimum in Continuous Mode
Electronic Display Temperature Limit	If the temperature of the electronics in the display housing exceeds 122°F (50°C), permanent damage to the display will occur. A remote mount is recommended for high or low temperature applications.

REMOTE DIGITAL THERMOMETER/TRANSMITTER

HOW TO ORDER: Choose options to build a part number. For example: **DTRBXTA01013A240A-R3**

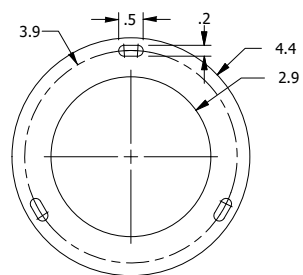
MODEL	MOUNTING	CAPILLARY LOCATION	4-20 mA OUTPUT LOCATION	CAPILLARY TYPE	CAPILLARY LENGTH "B"	PROCESS CONNECTION
DTR = Digital Remote Reading Thermometer	B = Back Flange F = Front Flange M = Rear Mounting Bracket	A = Lower Back Connect X = Bottom Connect	N = None S = M12 Upper Back T = M12 Right Side U = M12 Left Side V = M12 Top Side W = M12 Bottom Side (Back Connect Style Only)	A = Stainless Steel Armor V = Stainless Steel Overbraid P = Stainless Steel Armor with PVC Coating T = Stainless Steel Armor With Teflon Coating	??? = Enter Length in Feet. Example: 010 = 10 feet of Capillary.	1 = 1/2" NPT Sliding Compression Fitting (Fits Standard Thermowell) 4 = 1/4" NPT Sliding Compression Fitting (1/4" or 1/8" Dia. Stem) 8 = 1/8" NPT Sliding Compression Fitting (1/8" Dia. Stem Only) 5 = 3/4" NPT Adaptor U = 1/2" NPT Union (Fits Std. Thermowell) X = Plain Unthreaded Bushing

TEMPERATURE RANGE	STEM DIAMETER	STEM LENGTH	RTD	OPTIONS
3	A	240	A	-R3

Code	Temp. Range	Decimal Point	Straight Stems	Fast Response Stem	RTD	Options
1	-58°F to 392°F	Yes	A = 1/4" Dia. (Standard) F = 3/8" Dia. C = 1/8" Dia.	(Not Intended for Use with a Thermowell) B = 3/8" Dia. Reduced to 3/16" Dia. Tip	A = Class A RTD, 1,000Ω	-R1 = Cal Cert, 1 point (REOTEMP Picks Point) -R3 = Cal Cert, 3 point (REOTEMP Picks Points) -C1 = Cal Cert, 1 point (Customer Picks Point) -C3 = Cal Cert, 3 points (Customer Picks Points) -GL = Glass Lens -TS = Tag, Stainless -TP = Tag, Paper -EH = Explosion Proof Head FM, CSA, ATEX, & IECEx Approved, Bottom Connection Only -CL = Custom Logo Dial
2	-50°C to 200°C	Yes				
3*	-328°F to 1112°F ⚠	No				
4*	-200°C to 600°C ⚠	No				

⚠ *If the temperature of the electronics in the display housing exceeds 122°F (50°C), permanent damage to the display will occur. A remote mount is recommended for high or low temperature applications.

Note: Thermowells should be used whenever the stem or bulb would be exposed to pressure, corrosion, velocity, abrasion or shear forces. Thermowells also make it possible to remove the thermometer without losing pressure or the contents of the process.



Flange Drawing

Millimeter Stem Lengths
M???? = Use a code beginning in M to specify a mm stem length ex: 100mm = M0100



EH Explosion Proof Head

For Additional Options See Page 139
 For Thermowells See Pages 160-166

EH Head Approvals: FM Approved Enclosure Only: CL. I. GR. A,B,C,D; CL. II. GR. E,F,G; CL. III.; Type 4X. For CSA Class I, Group A, conduit seal is required within 18 inches. CL. I, ZONE 1, ATEX: d IIC, IP66. ATEX: II 2GD Ex d tD A21 IIC, FTZU 04 ATEX 0265U. IECEx FMG 06.0003U, Ex d II C, IP68.

THERMOMETERS

DIAL INDICATING THERMOMETER OPTIONS

Part #	Description	Industrial AA, RR, CC, CN, BB, SS, XR, XX, YY, YN, VR, VV, LL, MM, JJ	Small Dial OEM QQ, GG, HH	Digital DT, DTR, BT	Dual Mode Thermometer DMT
CASE FILL OPTIONS					
-SF	Silicone Filled Case	✓	N/A	N/A	✓
LENS OPTIONS					
-PC	Acrylic Window	✓	✓	N/A	✓
-PY	Polycarbonate Window	✓	✓	STD	✓
-TG	Tempered Safety Glass Lens	✓	N/A	N/A	✓
-SG	Laminated Safety Glass Lens	✓	N/A	N/A	✓
-GL	Plain Glass	STD	STD	✓	STD
STEM OPTIONS					
-PS	Pointed Tip	✓	✓	✓	N/A
-SS	316 Stainless Steel Stem	✓	✓	✓	✓
-F5	5/16" Diameter Stem (Not Available with 316SS Stem)	✓	✓	✓	N/A
-S3	3/8" Diameter Stem	✓	✓	✓	✓
-TF	Teflon Coating (Stem Only)	✓	✓	✓	✓
DIAL OPTIONS					
-CL	Custom Logo Dial	✓	✓	✓	✓
-HV	Hi-Vis Dial	✓	MQ	N/A	✓
-CB	Color Band	✓	MQ	N/A	✓
-CP	Color Pie	✓	MQ	N/A	✓
-WD	White Dial (Standard Ranges Only)	✓	✓	✓	✓
-MM	Min/Max Pointer	✓	N/A	N/A	✓
NL	No Logo	✓	✓	✓	✓
TAG OPTION					
-TS	Stainless Steel Tag (1-10 Characters)	✓	✓	✓	✓
-TP	Paper Tag	✓	✓	✓	✓
CERTIFICATION OPTIONS					
-R1	1pt. Calibration Certification (REOTEMP Chooses the Point)	✓	✓	✓	✓
-R3	3 pt. Calibration Certification (REOTEMP Chooses the Points)	✓	✓	✓	✓
-C1	1 pt. Calibration Certification (Customer Chooses the Point)	✓	✓	✓	✓
-C3	3 pt. Calibration Certification (Customer Chooses the Points)	✓	✓	✓	✓
-CS	NIST Calibration Sticker (No Logged Points)	✓	✓	✓	✓
-CC	Certificate of Conformance	✓	✓	✓	✓
OTHER					
-3H	316 Stainless Steel Head & Bezel	✓	N/A	STD	✓
-HT	Heat Transfer Compound	✓	✓	✓	✓
-CH	Spring Handle (T-27)	✓	✓	✓	N/A
-AS	Allows Bimet to Fit 1-1/4-18 Industrial Thermowell	✓	✓	✓	✓
-EH	Explosion Proof Head	N/A	N/A	✓	✓

✓ Indicates that the option is available with the model.

STD Indicates standard options with no additional cost.

N/A Indicates the option is not available with this model.

MQ Minimum order quantity applies.